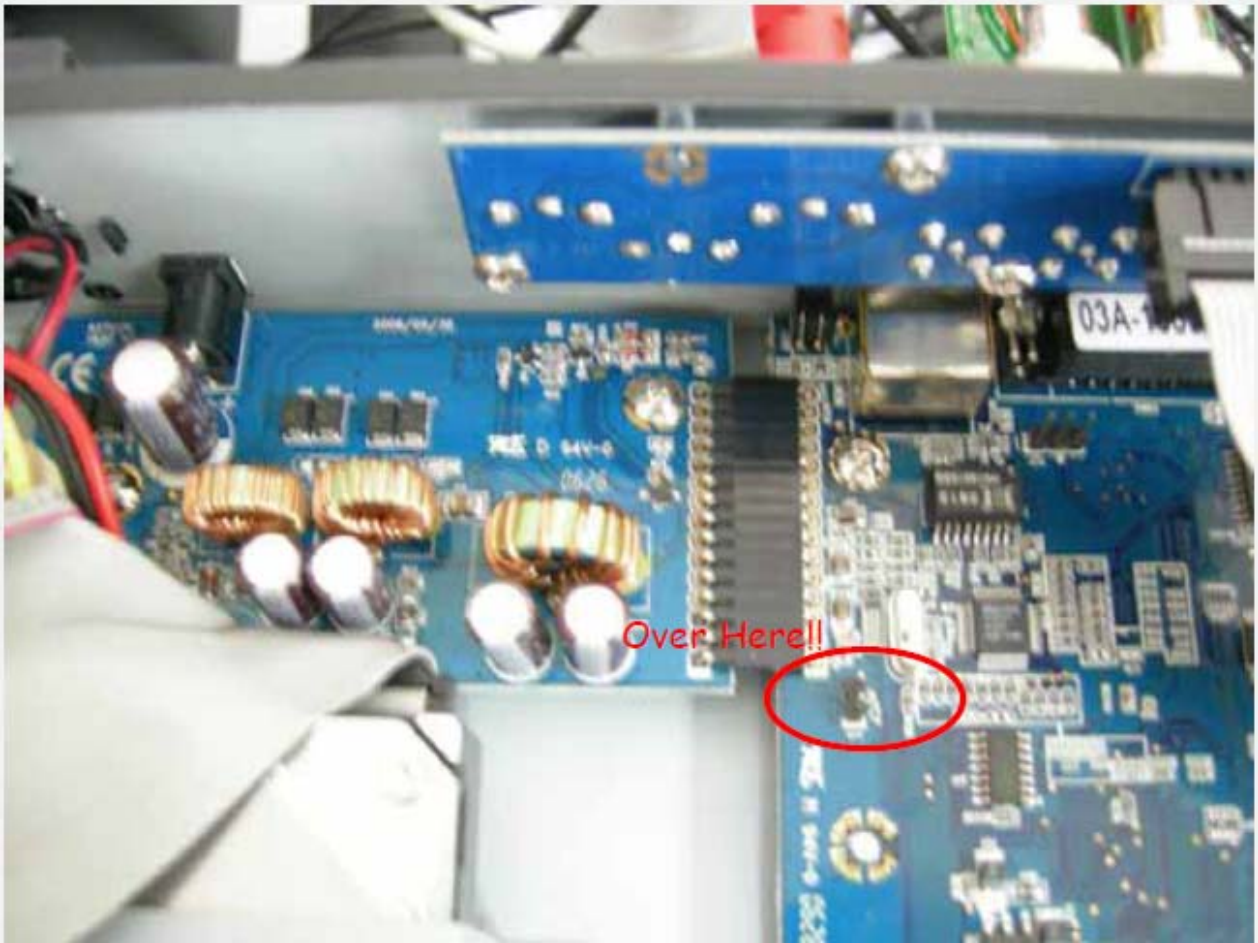


## Q&A\_ How to Hardware Reset DVR-460?

**Step 1:** Turn off the power and dismount the cover from the unit.



**Step 2:** Find the Reset Point (Near rare board).



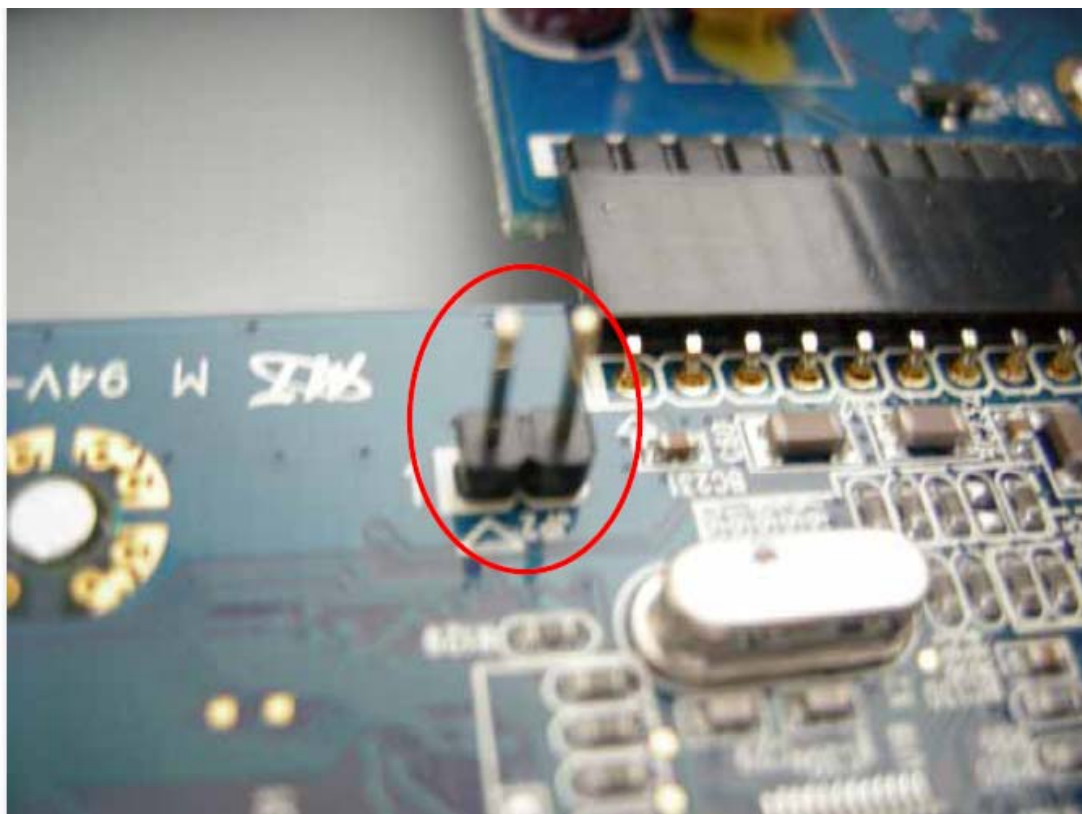
**Step 3:** Take a close look at Reset Point (The 2 pinholes with a "JP2")



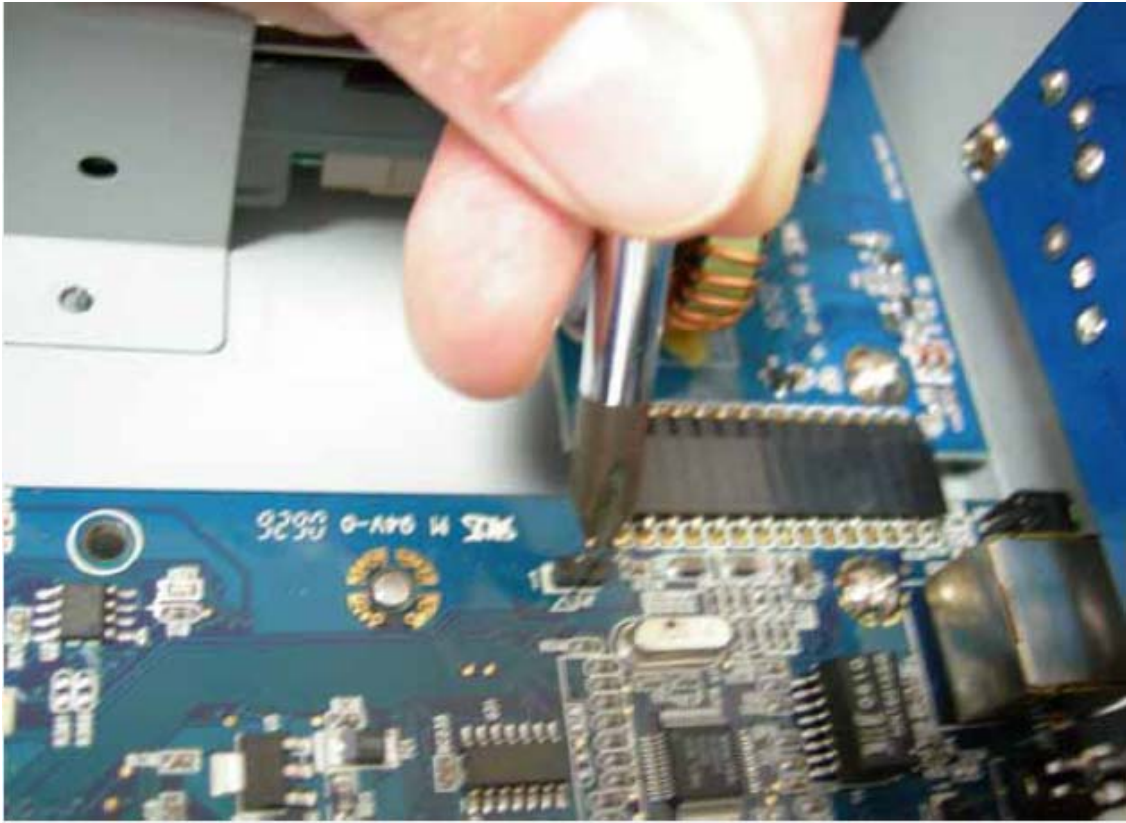
**PLANET Technology Corporation**

11F, No. 96, Min Chuan Road, Hsin Tien, Taipei, Taiwan, R.O.C.  
Tel: 886-2-2219-9518 Fax: 886-2-2219-9528  
Email: [sales@planet.com.tw](mailto:sales@planet.com.tw) Web site: <http://www.planet.com.tw>  
VoIP Gateway: [vip.planet.com.tw](http://vip.planet.com.tw)

Planet reserves the right to change specifications without prior notice.  
All brand names and trademarks are property of their respective owners.  
Copyright (c) 2010 PLANET Technology Corp. All rights reserved



**Step 4:** Connect the two jumps (pinholes) to form a short circuit. Then plug in the power and hold the short circuit for more than 10 seconds.



#### PLANET Technology Corporation

11F, No. 96, Min Chuan Road, Hsin Tien, Taipei, Taiwan, R.O.C.

Tel: 886-2-2219-9518 Fax: 886-2-2219-9528

Email: [sales@planet.com.tw](mailto:sales@planet.com.tw) Web site: <http://www.planet.com.tw>

VoIP Gateway: [vip.planet.com.tw](http://vip.planet.com.tw)

*Planet reserves the right to change specifications without prior notice.  
All brand names and trademarks are property of their respective owners.  
Copyright (c) 2010 PLANET Technology Corp. All rights reserved*